

Win prizes and promote farm safety in this year's Farm safety calendar competition

Show off your drawing skills, learn more about farm safety and win some great prizes!

Workplace Health and Safety Queensland's Farm safety calendar competition is open **until 5pm on Friday 26 June 2020.**

Queensland primary school students are invited to submit drawings to illustrate a farm safety message with the 12 winning drawings published in the 2021 Farm safety calendar. Drawing is a great distraction for children during these trying times. Whether students are at school or home, they can enter the competition.

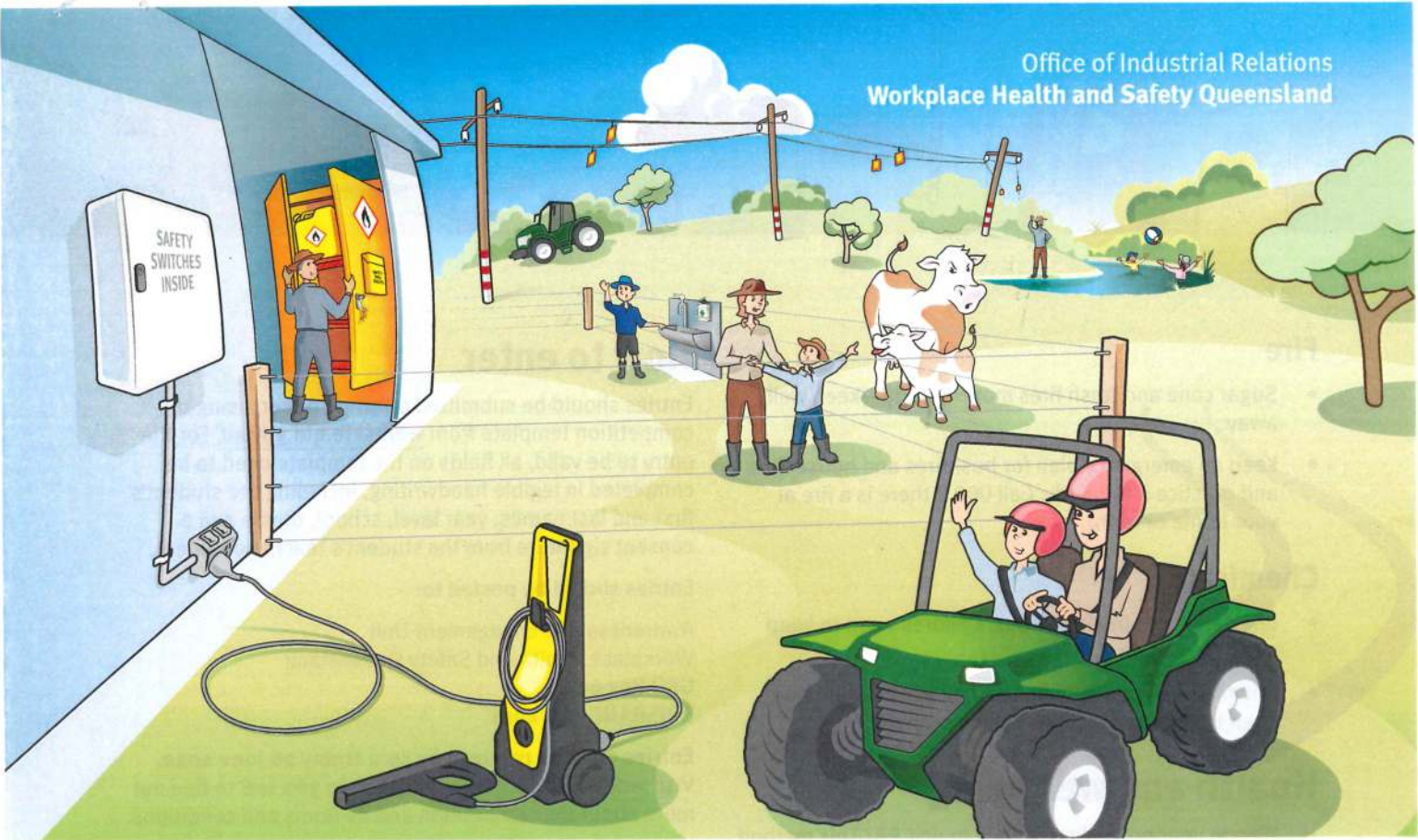
Each winner will also receive \$250 and \$500 for their school.

The calendar will be available for free and distributed throughout Queensland.

Help promote the importance of safety on farms to young people and families in your area.

Find out how to enter at **worksafe.qld.gov.au**





Teacher and parent resource

Learning outcomes

The Farm safety calendar competition raises awareness among primary school students and their communities of common hazards on farms and other rural properties. The published calendar is an opportunity for safety messages to be prominently displayed in the home throughout the year, reminding Queenslanders of all ages to work and play safely on farm properties.

Drawing is a great distraction for students during these trying times. Whether students are at school or home, they can enter the competition.

Students are asked to draw and colour a picture (using the competition template available at worksafe.qld.gov.au) that illustrates one farm safety message (see below).

When speaking to students about farm safety and the competition, discuss each of the risks, why they are dangerous and how the risks can be controlled to keep them safe. Also talk about why it is important to talk to an adult if they feel unsafe or see something unsafe.

Choose a safety message

Electrical

- Don't use damaged power cords—turn off the power and tell someone about it straight away.
- Safety switches save lives—make sure they're fitted and tested.
- Look up and live—look out for powerlines when using machinery.

Animals

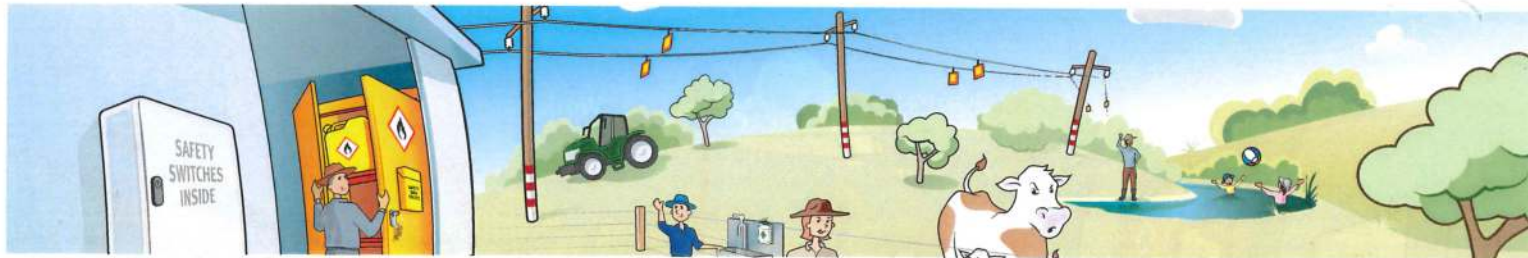
- Animals can be unpredictable. Respect their size and strength and learn how to work with them safely.
- Always wash your hands after working with livestock or playing with animals as they carry diseases that can transfer to people.

Tractors and machinery

- Look out for machinery and vehicles because the driver may not see you.
- Quad bikes are a great tool, but they are not a toy. Ride ready—wear a helmet, never double, kids only use a kid sized bike, get training, and ride on well-known tracks.

Water storage and fenced yard

- Dams, creeks and channels can be dangerous places to swim. Make sure you have an adult with you to stay safe.
- A fenced yard for young kids and toddlers to play in will keep them away from many farm dangers.



Fire

- Sugar cane and trash fires move quickly—keep well away.
- Keep an emergency plan for bushfires and house fires and practice it regularly. Call 000 if there is a fire at your home or farm.

Chemicals

- Chemicals can be dangerous. Children need to keep away from them.
- Chemicals should only be used by adults who have been trained in how to use them properly.

Health and wellbeing

- Who in your house knows how to do CPR? This method of chest compressions and mouth-to-mouth breathing can save lives!
- Be sun safe! Work in the shade in the middle of the day and remember to drink water and have rest breaks—heat stress can make you really sick.

Helpful resources

You can find more farm safety resources on our webpage [worksafe.qld.gov.au](https://www.worksafe.qld.gov.au) or check out children on farms at [farmsafe.org.au](https://www.farmsafe.org.au)

How to enter

Entries should be submitted on white paper, using the competition template from [worksafe.qld.gov.au](https://www.worksafe.qld.gov.au). For the entry to be valid, all fields on the template need to be completed in legible handwriting, including the student's first and last names, year level, school, theme and a consent signature from the student's teacher or parent.

Entries should be posted to:

Awareness and Engagement Unit
Workplace Health and Safety Queensland
GPO Box 69
BRISBANE QLD 4001

Entries must be received by 5pm Friday 26 June 2020.

Visit [worksafe.qld.gov.au](https://www.worksafe.qld.gov.au) or call **1300 362 128** to find out more about the competition and its terms and conditions.

