

# Welcome

## to Learning for Life

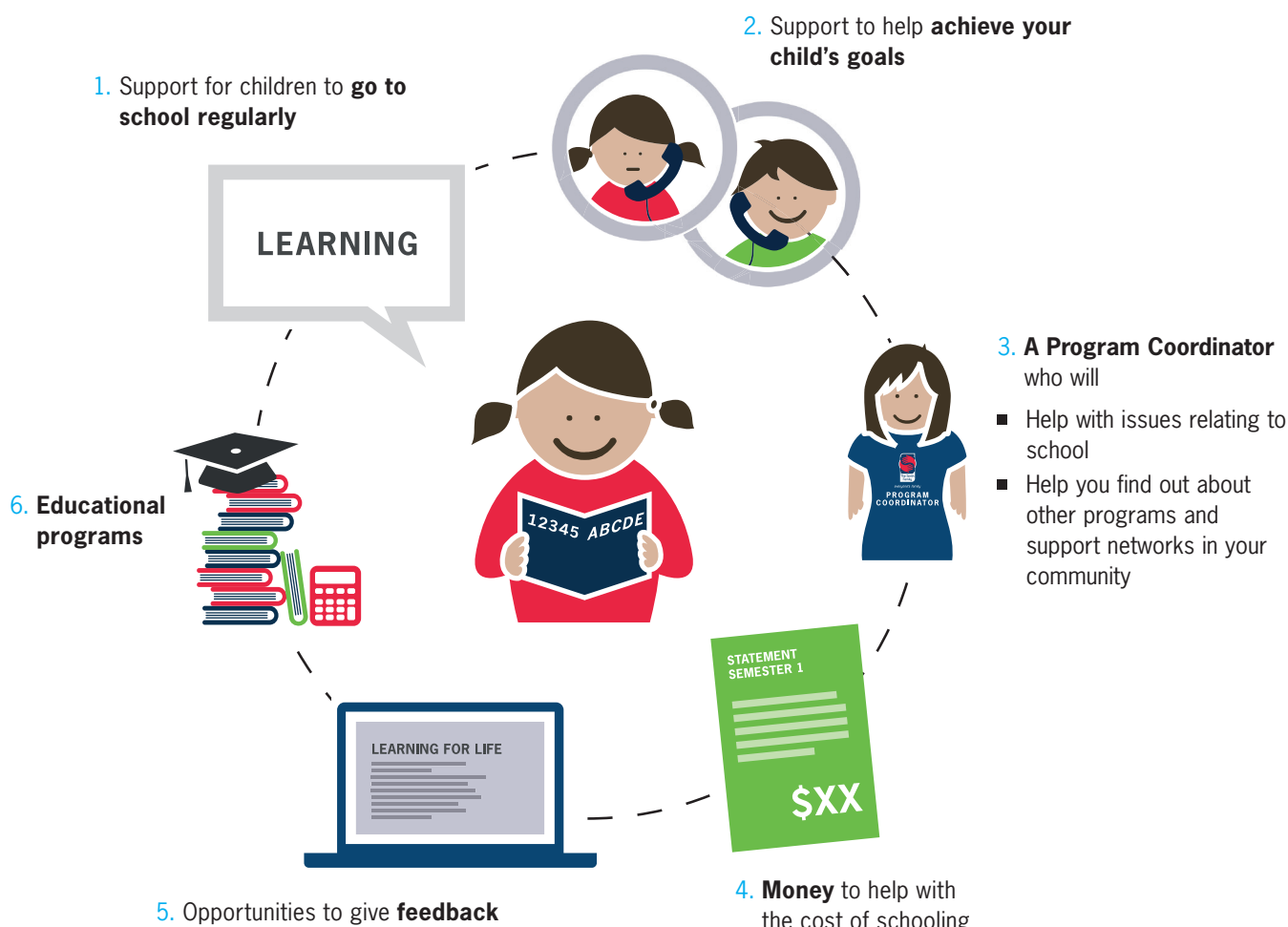


everyone's family

**Congratulations and welcome! Your family has entered into a partnership with The Smith Family to take part in Learning for Life. We will both have commitments to honour that will contribute to its ongoing success.**

We'll be providing you and your family with opportunities that will support your child's education and increase their chance of success at school, TAFE and University.

*Learning for Life will also provide:*



We might also invite members of your family to events and activities. **Talk to your Program Coordinator about what might be available in your community.**

## Financial support

The Smith Family's student scholarships are funded by *Learning for Life* sponsors. Each sponsor wants to support the education of young Australians and their families. They may sponsor alone, as an individual, with other members of their family, or as an activity through their workplace.

Amounts vary according to year level. Payments are made to you twice a year, into your chosen bank account.

	School Kindy/ Prep – Year 10	Senior School Years 11 & 12	Tertiary TAFE or UNI
Semester 1	\$270.00	\$450.00	Ask for TAFE & UNI info
Semester 2	\$150.00	\$229.00	
TOTAL	\$420.00	\$679.00	

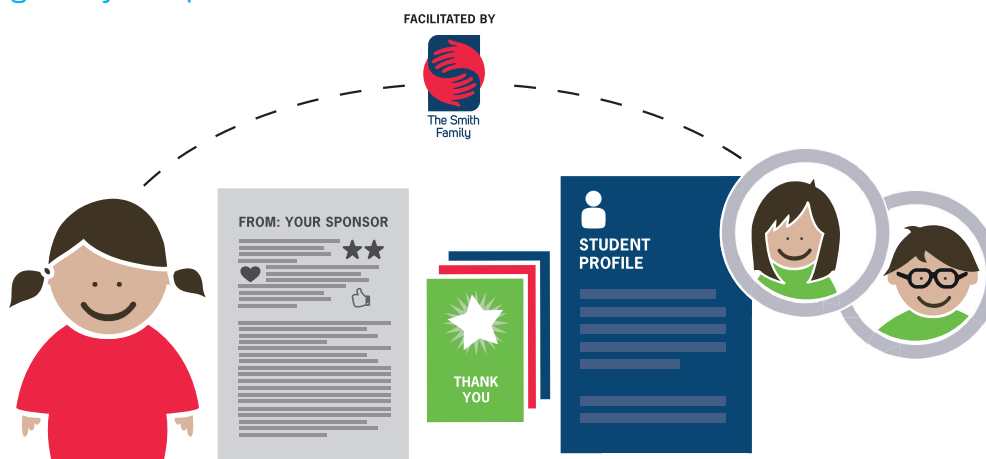


The funds must be used to pay for school-related expenses such as school uniforms and shoes, stationery, books, school camps and excursions. Please keep receipts.



Payments cannot be used to pay for mobile phones, food, household or medical bills, or school fees.

## Communicating with your sponsor



**The Smith Family maintains the privacy and confidentiality of families, students and sponsors. Sponsors are only given your child's first name, month and year of birth, school year and general interests.**

Sponsors enjoy receiving information on your child's progress.

Each *Learning for Life* student provides a Student Profile at the beginning of each school year. The Profile is forwarded on to the sponsor and provides a chance for you and your child to share information about your interests and your year at school.

In addition to the Student Profile, many families and sponsors enjoy writing to each other. The Smith Family strongly encourages students and sponsors to send each other cards and letters during the year. The Smith Family helps this to happen.

**All correspondence is sent to The Smith Family first to maintain privacy and confidentiality.**